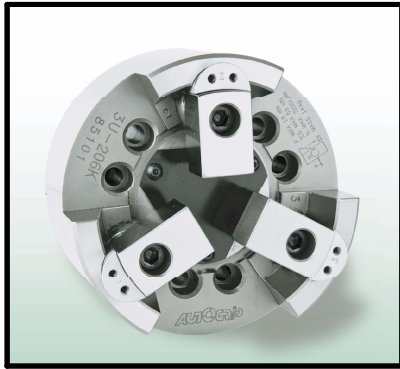
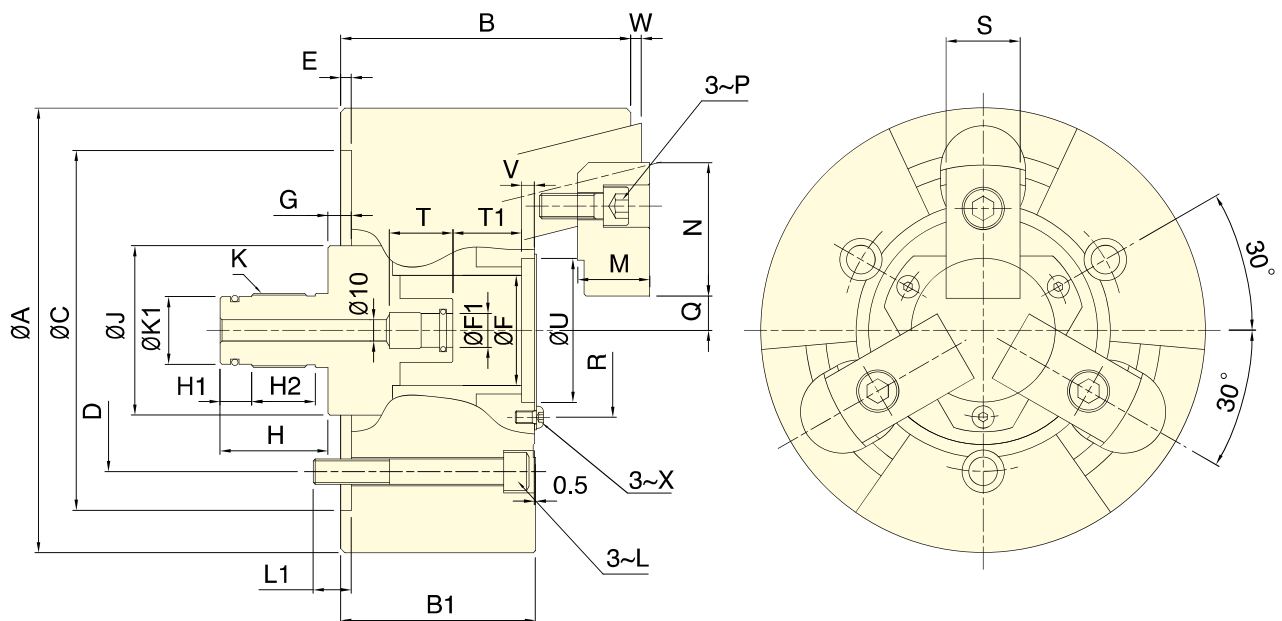


PULL LOCK POWER CHUCK



- It's a Pin-Arbor Draw Down type 3-jaw power chuck.
- High radial gripping force and high accuracy.
- Suitable for heavy machining.



Subject to technical changes.

Spec. Model	Plunger stroke mm	Jaw stroke(Dia.) mm	Chucking Range mm		Max. D.B. pull kN(kgf)	Max. clamping force kN(kgf)	Max. speed min ⁻¹ (r.p.m)	I kg·m ²	Weight kg	Matching cyl.	Max. pressure Mpa (kgf/cm ²)
			Max.	Min.							
3U-205K	6	3	84	15	13.9(1420)	39.7(4050)	8000	0.018	6.8	RL-100	2.0(20)
3U-206K	10	5	105	24	18.0(1835)	58.0(5910)	7000	0.055	14.9	RL-A100N	2.5(25)
3U-208K			132	25	25.0(2550)	80.0(8150)	6000	0.14	25.8	RL-125 RL-A125N	2.2(22)
3U-210K			163	34	35.0(3570)	100.0(10100)	4500	0.36	44.0		3.1(31)
3U-212K			210	81			3600	0.68	63.8		

Size Model	A	B	B1	C(H6)	D	E	F	F1(H8)	Gmax.	Gmin.	H	H1	H2	J	K	K1	L	
3U-205K	135	84.5	63	110	82.6	4	35	14	16	10	42	12	30	50	M25x1.5	22	M10	
3U-206K	168	118	80	140	104.8		45		20		48			60	M28x1.5	26		
3U-208K	210	137	92	170	133.4	5	52	16	21	11	51	15	30	80	M35x1.5	32	M12	
3U-210K	254	152	102	220	171.4		75		25					15	105	M38x1.5		35
3U-212K	304	157					100		25					15	135	M45x1.5		42

Size Model	L1	M	N	P	Qmax.	Qmin.	R	S	T	T1	U(H6)	V	Wmax.	Wmin.	X
3U-205K	15	20	41.5	M8	13.25	11.75	55	24	25	15.5	45	5	3	-3	M5
3U-206K	16.5	30	50	M10	15.75	13.25	72	30		26.5	58				
3U-208K	18	34	63	M12	16.25	13.75	82	35	30	32.5	68	6	5	-5	M6
3U-210K	23	39	74	M14	20.75	18.25	107	40		36.5	93				M8
3U-212K	26	44			44.25	41.75	130			114	M10				

