

Powerfine



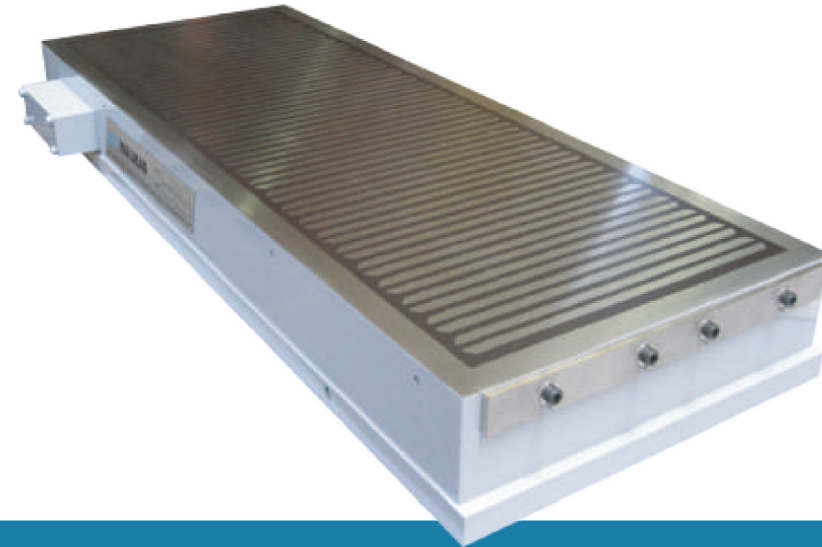
Surface grinding

CONSTRUCTION

- + Powerfine chucks offer the best cost/quality ratio
- + Transverse pole division, steel/epoxy resin 7/6/7/4 mm
- + Nominal holding force: 110 N/cm²

APPLICATION

- + General purpose finish grinding
- + Minimum workpiece thickness: 4 mm
- + Minimum workpiece length: 30 mm



Model	W [mm]	L [mm]	H [mm]	Weight [kg]
POWE200400	200	400	79	62
POWE250500	250	500	79	90
POWE300600	300	600	79	159
POWE400800	400	800	79	155
POWE3001000	300	1000	82	151
POWE5001000	500	1000	82	252
POWE6001000	600	1000	82	310

SCOPE OF SUPPLY

- + Back and end stop
- + Set of clamps
- + Power cord of 3 m
- + Sizes 300 x 600 mm and bigger have studs for handling

SUITABLE CONTROL UNIT

- + Consult with us a suitable control unit and electrical connection.
- + For more information, refer to the section **control units on pg. 33.**

