

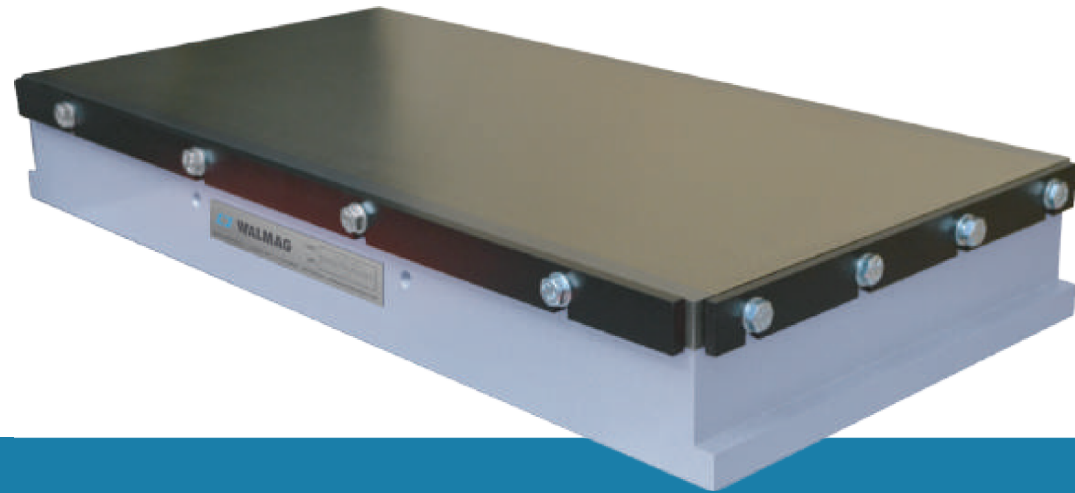
Electrofine



Surface
grinding

CONSTRUCTION

- + Solid top plate with transverse poles
- + Pole division: Fine 3 mm steel and 1 mm brass, Microfine 1.4 mm steel and 0.5 mm brass
- + Life span (regrinding limit): 6 mm
- + Multi core magnetic system
- + Solid piece body with firmly embedded coils
- + Standard input voltage: 110 VDC
- + Nominal holding force: 100 N/cm² and 110 N/cm²
- + Electrofine chucks with longitudinal poles can also be supplied



Electrofine

Model	W [mm]	L [mm]	H [mm]	Wattage [W]	Weight [kg]	Pole pitch
ELEC150300T31	150	300	74	77,5	25	T4 3+1
ELEC200400T31	200	400	74	112	41	T4 3+1
ELEC200500T31	200	500	74	166	55	T4 3+1
ELEC200600T31	200	600	74	137	65	T4 3+1
ELEC300600T31	300	600	74	253	94	T4 3+1

Microfine

Model	W [mm]	L [mm]	H [mm]	Wattage [W]	Weight [kg]	Pole pitch
ELEC150250T1405	150	250	72	71	19	T1,9 1,4+0,5
ELEC150300T1405	150	300	72	78	22	T1,9 1,4+0,5
ELEC200400T1405	200	400	72	113	39	T1,9 1,4+0,5
ELEC200500T1405	200	500	72	166	52	T1,9 1,4+0,5
ELEC200600T1405	200	600	72	137	61	T1,9 1,4+0,5
ELEC300600T1405	300	600	72	252	97	T1,9 1,4+0,5

Other sizes and voltages can be supplied on request

APPLICATIONS

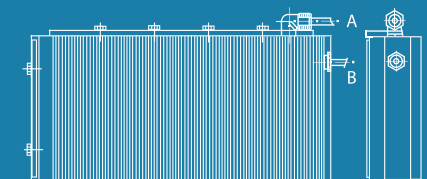
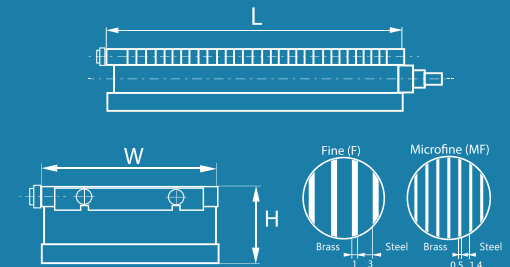
- + Surface grinding of small size up to large components
- + Recommended minimum workpiece size for Electrofine: 25 x 25 x 3 mm
- + Recommended minimum workpiece size for Microfine: 15 x 15 x 1 mm

SCOPE OF SUPPLY

- + Back and end stop
- + Set of clamps
- + Power cord of 3 m

SUITABLE CONTROL UNIT

- + Consult with us a suitable control unit and electrical connection.
- + For more information, refer to the section **control units** on pg. 33.



Two types of power supply