

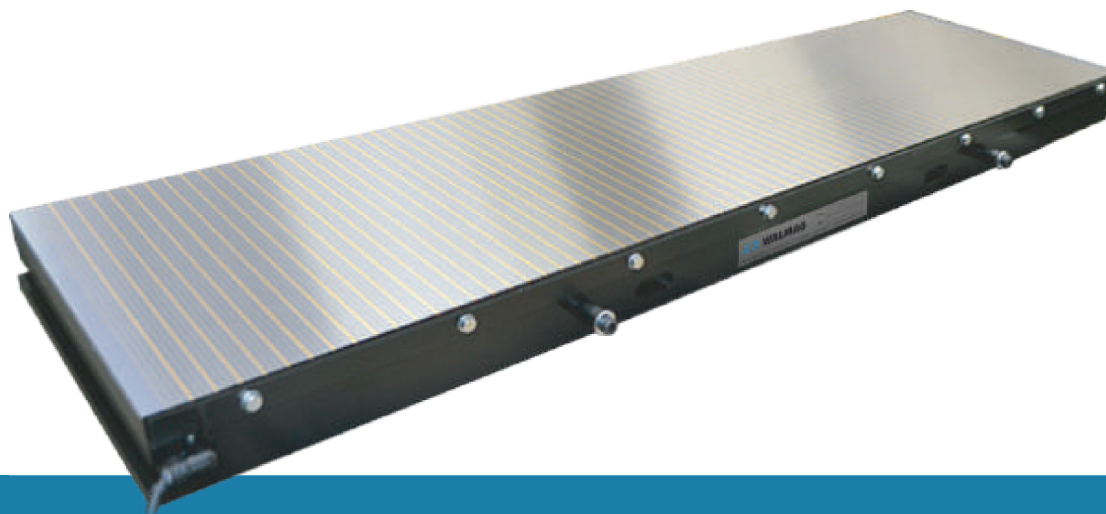
# BJP



Surface  
grinding

## CONSTRUCTION

- + Heavy duty top plate with transverse poles; major pole distance: approx. 42 mm
- + Fine pole division: 4 mm steel and 1 mm brass
- + Life span (regrinding limit): 7 mm
- + Multi coil magnetic system
- + Solid piece body with firmly embedded coils
- + Standard input voltage: 110 VDC
- + Waterproof assembly
- + Nominal holding force: 130 N/cm<sup>2</sup>



Model	W [mm]	L [mm]	H [mm]	Wattage [W]	Weight [kg]	Cable [m]
BJP200600	200	600	98	160	77	4
BJP300600	300	600	98	215	118	4
BJP400800	400	800	100	350	212	7
BJP3001000	300	1000	103	350	201	4
BJP4001000	400	1000	103	435	269	7
BJP5001000	500	1000	108	530	352	7
BJP6001000	600	1000	113	620	420	7

Other sizes can be supplied on request

## APPLICATIONS

- + Heavy duty surface grinding of medium size up to large components
- + Recommended minimum workpiece size: 35x 35 x 3 mm

## SCOPE OF SUPPLY

- + Back and end stop
- + Set of clamps
- + Power cord of 4 / 7 m

## SUITABLE CONTROL UNIT

- + Consult with us a suitable control unit and electrical connection.
- + For more information, refer to the section **control units on pg. 33.**

