

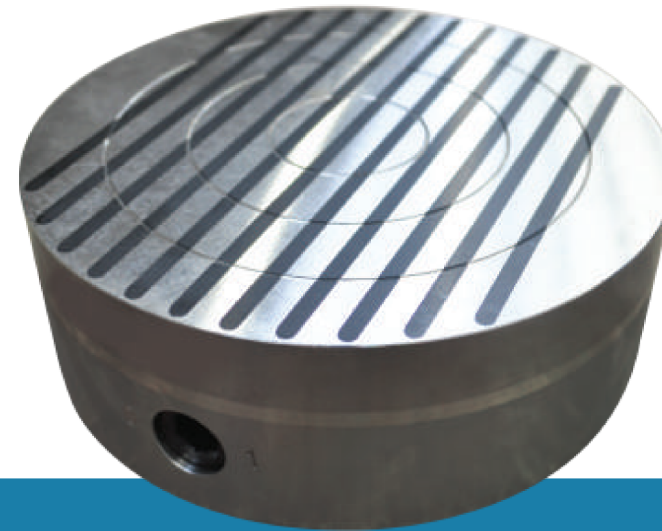
Permagrip



Circular
grinding

CONSTRUCTION

- + Robust top plate, parallel pole division 8 mm steel + 3 mm epoxy resin
- + Life span (regrinding limit): 7 mm
- + Solid steel body with robust actuating mechanism
- + Neodymium magnetic system; nominal holding force: 80 N/cm²
- + Waterproof design



APPLICATIONS

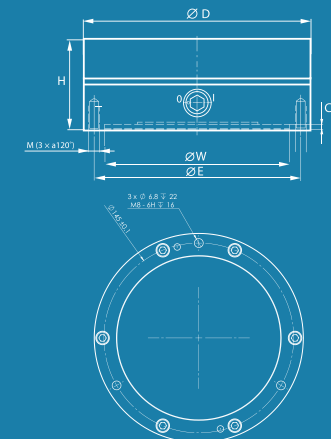
- + Finish (circular) grinding
- + Turning

SCOPE OF SUPPLY

- + Allen key

MOUNTING OF CHUCK TO MACHINE

The underside of the body has a recess and 3 or 4 threaded holes for mounting a suitable flange. See dimensions W, E and M.



Model	D [mm]	H [mm]	W x C [mm]	M [mm]	E [mm]	Weight [kg]
PERM130	130	63	80x4	3 x M8	113	6,5
PERM150	150	63	100x4	3 x M8	120	8
PERM160	160	63	125x4	3 x M8	145	8,5

Other dimensions on request