

Epering



Circular
grinding



CONSTRUCTION

- + Sturdy top plate with concentric poles
- + Standard pole pitch 16 mm (11 mm steel + 5 mm brass)
- + Solid machined body with firmly embedded coils and permanent magnets
- + Standard electrical connection from centre bottom
- + Waterproof assembly
- + Nominal holding force: 110 N/cm²

WORKPIECE

- + Minimum workpiece thickness: 5 mm
- + Minimum workpiece length: 55 mm

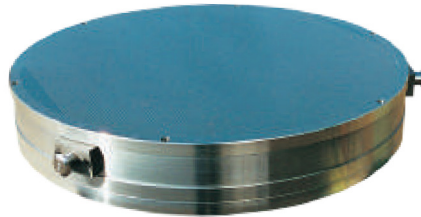
APPLICATION

- + Grinding of medium up to large workpieces

Epefine



Circular
grinding



CONSTRUCTION

- + Sturdy top plate with parallel poles
- + Standard pole pitch 5 mm (4 mm steel + 1 mm brass or epoxy)
- + Solid machined body with firmly embedded coils and permanent magnets
- + Standard electrical connection from centre bottom
- + Waterproof assembly
- + Nominal holding force: 100 N/cm²

WORKPIECE

- + Minimum workpiece thickness: 2 mm
- + Minimum workpiece length: 30 mm

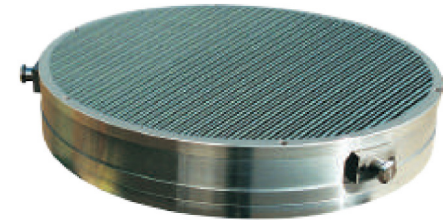
APPLICATION

- + Finish grinding of small and thin workpieces

Powerfine



Circular
grinding



CONSTRUCTION

- + Clamping surface with parallel poles
- + Standard pole pitch 11 mm (7 mm steel + 4 mm brass or epoxy)
- + Solid machined body with firmly embedded coils and permanent magnets
- + Standard electrical connection from centre bottom
- + Waterproof assembly
- + Nominal holding force: 110 N/cm²

WORKPIECE

- + Minimum workpiece thickness: 4 mm
- + Minimum workpiece length: 30 mm

APPLICATION

- + Universal grinding of small up to large workpieces