

# Neomicro pallet



EDM



Surface  
grinding

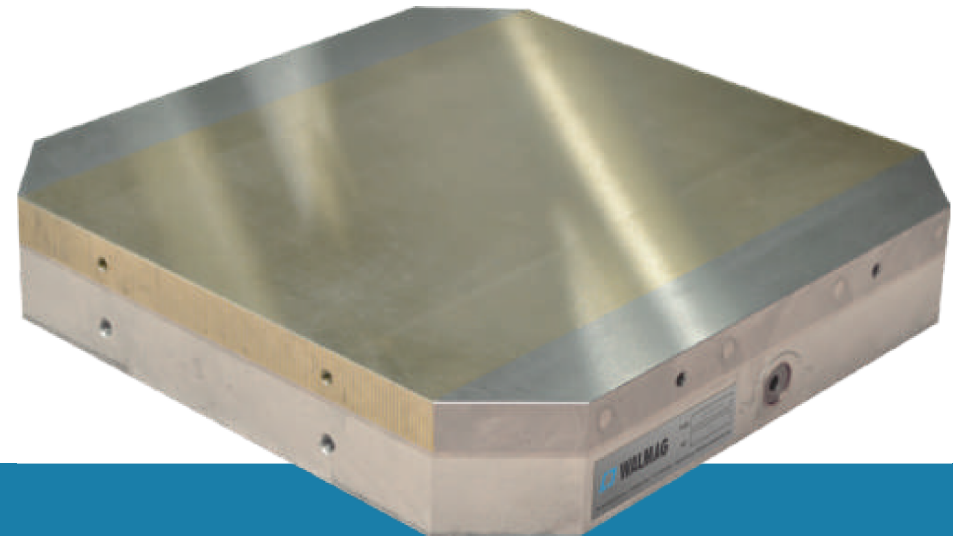


Pallets

Walmag Magnetics range of magnetic pallet chucks are designed for use in conjunction with zero-reference systems, like System 3R, Erowa, Hirschmann and others. The magnetic pallets are typically square with sharp or cut-off corners and can be either mounted on top of a pallet or fitted with zero reference elements. The advantage of the latter version being the lower height and weight of the clamping tool.

## CONSTRUCTION

- + Micropitch pole division, 1.4 mm of steel, 0.5 mm of brass
- + Life span of top plate: 7 mm
- + Neodymium magnetic system, nominal holding force: 100 N/cm<sup>2</sup>
- + Solid aluminium body



## APPLICATION

- + Holding of very small to large components
- + Precision grinding
- + Spark erosion (die sinking)

## SCOPE OF SUPPLY

- + Back and end stop
- + Allen key

Model	W [mm]	L [mm]	H [mm]	Weight [kg]
NEOC240240P	240	240	63,5	21,5
NEOC280280P	280	280	63,5	29
NEOC320320P	320	320	63,5	38

